



# Hamaton

Innovation to Perfection

## TPMS Product Brochure





## ABOUT HAMATON

**H**amaton is a global leader in the manufacture and supply of traditional tyre valves and TPMS products for both OE and the aftermarket. Hamaton Ltd's head office is located in Whetstone, Leicestershire in the UK, with our main production facility situated in Hangzhou, China. With another distribution centre located in Germany, Hamaton are able to distribute our extensive range of TPMS products across the World.



## TPMS PRODUCT RANGE

The Hamaton product range, manufactured in an OE environment to certified standards, includes the EU-Pro family of universal sensors, replacement and consumable parts, and workshop tools.

Hamaton also offer ATEQ diagnostic tools and a collection of its own branded tools developed in partnership with the manufacturer, such as the H57.

## UNIVERSAL SENSORS



### The NFC-Enabled Universal Sensor



#### What Sets this Sensor Apart?

EU-Pro Hybrid NFC Sensors can be configured and programmed with a smartphone

This solution is perfect for workshops, wheel assemblers and companies looking to maximise TPMS business opportunities.



#### What is NFC?

NFC is a short-range wireless technology that allows compatible devices to communicate. Its most common use on a smartphone is making quick and easy payments with Apple Pay or Google Pay.

### NFC Benefits & App Features

#### Superfast Configuration

Our dedicated app\* configures Hybrid NFC sensors in just one tap, outperforming traditional diagnostic tools.

#### Two Ways to Configure

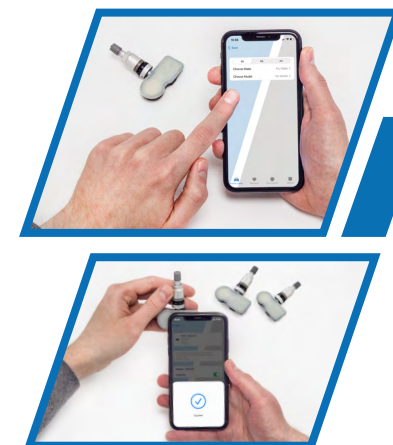
Create a new ID and use any diagnostic tool to relearn a vehicle. Alternatively, manually enter an existing OE sensor ID and skip the relearn process altogether.

#### No Potential for Error

Users can be rest assured they have configured the correct sensor thanks to the short-range transmission of NFC.

#### Free to Download & Update

Say goodbye to subscription fees and manual updates. The app updates\*\* automatically, so users do not have to! These real-time updates ensure the latest vehicle coverage will always be at your fingertips.



The EU-Pro Hybrid NFC sensor also includes the same main features as the Hybrid 3.5 (on page 3).

**Silver Clamp-In:** [HTS-A71BM](#)

**Black Clamp-In:** [HTS-A71BN](#)

**Snap-In:** [HTS-A71BA](#)

**Graphite Clamp-In:** [HTS-A71BP](#)

\*Available for NFC-enabled Android phones and the iPhone 7 or newer with a minimum of iOS 15.

\*\*Mobile data or a Wi-Fi connection is required.

## UNIVERSAL SENSORS



**Configurable & Programmable  
Universal Sensors**

- Configurable in 1-3 seconds, as a high percentage of known vehicles protocols are stored on the sensor
- Programmable with new protocols added as they become available, future-proofing stock
- Compatible with leading diagnostic tools, including those manufactured by ATEQ
- Designed for an optimal fit with OE and aftermarket wheels
- Powerful Maxell battery and the latest NXP chip
- 3-year sensor warranty\*

**Silver Clamp-In:** [HTS-A68BM](#)

**Black Clamp-In:** [HTS-A68BN](#)

**Snap-In:** [HTS-A68BA](#)

**Graphite Clamp-In:** [HTS-A68BP](#)



\*Sensors have a 3-year warranty, valves are warranted for two years.

Valves must be serviced/replaced when the tyre bead is broken to uphold the sensor warranty.

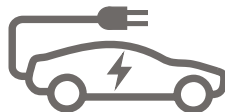
## TESLA BLE SENSOR



The EU-Pro Hybrid BLE is a direct replacement for the Sysgration (Bluetooth Low Energy) BLE sensor used by Tesla vehicles. This aftermarket solution employs BLE to alert the ECU when tyre pressure drops, and is pre-programmed, enabling technicians to skip the programming step.

### Coverage:

- Tesla Model 3 (Oct 2020+)
- Tesla Model S (Jun 2021+)
- Tesla Model X (Oct 2021+)
- Tesla Model Y (Oct 2020+)



**Silver Clamp-In:** [HTS-B10BM](#)

**Black Clamp-In:** [HTS-B10BN](#)

**Graphite Clamp-In:** [HTS-B10BP](#)

## OE REPLACEMENT SENSORS

# OE-R

- Cost-effective replacement for Original Equipment (OE) sensors
- No programming required - fully functional following a TPMS relearn procedure
- Designed for an optimal fit with OE and aftermarket wheels
- Powerful Maxell battery and the latest NXP chip
- 3-year sensor warranty\*



\*Sensors have a 3-year warranty, valves are warranted for two years.

Valves must be serviced/replaced when the tyre bead is broken to uphold the sensor warranty.



## The Cost-Effective Universal Sensor

The Lite version of the standard Hybrid 3.5 is a cost-effective, blank, purely programmable sensor, meaning protocols need programming to the sensor with a compatible diagnostic tool.

**Silver Clamp-In:** [HTS-A88CM](#)

**Black Clamp-In:** [HTS-A88CN](#)

**Snap-In:** [HTS-A88CA](#)

**Graphite Clamp-In:** [HTS-A88CP](#)



## VALVE OPTIONS FOR HAMATON SENSORS

The EU-Pro family of sensors have four valve stem options: our most popular aftermarket Snap-In and three Clamp-In valves designed to complement alloy wheels.



**Silver Clamp-In:**

[6-266B](#)



**Snap-In:**

[6-207](#)



**Black Clamp-In:**

[6-266B-BK](#)



**Graphite Clamp-In:**

[6-266A-SH](#)



## DIAGNOSTIC TOOLS

### Standard Features

- Read and activate 100% of OE and aftermarket sensors
- Manually enter IDs and copy a set of wheels
- Retrieve IDs from the ECU\*
- Unlock the ECU\*
- Manual relearn procedures
- ATEQ's Live Sensor platform (updates sensor information in real-time)
- ATEQ's Sync-ID technology (increases OBDII relearn coverage to over 90%)\*
- Remote Key Entry (RKE) test
- A sensor part number directory
- Easy-to-use icon-driven navigation and a comprehensive language selector

### Hamaton and ATEQ Diagnostic Tools | Key Differences

	Hamaton	ATEQ
Configure/Program Sensors	EU-Pro Hybrid and T-Pro Hybrid Sensors	All Popular Universal Sensors
Multi-programming	EU-Pro Hybrid and T-Pro Hybrid Sensors	All Popular Universal Sensors
Free Software Subscription	5 Years	1 Year (VT37 & VT67) 3 Years (VT47 & VT57)
Warranty	2 Years	1 Year (VT37, VT47 & VT57) 2 Years (VT67)

The Hamaton H57\*\* can be upgraded to configure/program other universal sensors. See page 9 for more information.

### Additional Features Per Diagnostic Tool

#### ATEQ VT67

- 8" colour touchscreen
- Reads BLE Sensors
- Update via Wi-Fi
- Customer management
  - Capture images of vehicle parts
  - Email TPMS reports
  - Storage: 12GB
- TPMS diagnostics
  - Retrieve DTCs
  - ID Match (compare sensor IDs to the ECU)
- Tyre management
  - Record DOT codes (date and place of tyre manufacture)
  - Change tyre pressure placard value
  - Measure tyre tread depth\*\*\*
- Vehicle databases: Australasia, Europe, Japan and North America
- OBDII port locations
- OBDII connector included



PN: ATE-D084

\*Excludes the ATEQ VT37.

\*\*If users upgrade the sensor coverage, the subscription period will revert to the remaining time offered with the equivalent ATEQ tool.

\*\*\*Tyre Tread Depth Gauge sold separately.



PN: HAM-D105



PN: ATE-D104



#### Hamaton H47

- 2.8" colour display
- Tyre management
  - Change tyre pressure placard value
- Vehicle databases: Europe, Eurasia and North America
- OBDII connector included

PN: HAM-D065

#### Hamaton H57 & ATEQ VT57 BLE

- 4.3" colour touchscreen
- Reads BLE Sensors
- Update via Wi-Fi
- Customer management
  - Store up to 800 service records
- TPMS diagnostics
  - Retrieve DTCs
- Tyre management
  - Record DOT codes (date and place of tyre manufacture)
  - Change tyre pressure placard value
  - Measure tyre tread depth\*
- Vehicle databases: Australasia, Europe, Eurasia, Japan, Korea and North America
- OBDII port locations
- OBDII module and connector included
- Non-BLE HAM-D081 and ATE-D081 versions also available



PN: ATE-D105

#### ATEQ VT47 BLE

- 2.8" colour display
- Reads BLE Sensors
- Tyre management
  - Change tyre pressure placard value
- Vehicle databases: Europe, Eurasia and North America
- OBDII connector included



#### ATEQ VT37

- 2.8" colour display
- Vehicle databases: Australasia, Europe, Eurasia and North America

PN: ATE-D079



\*Tyre Tread Depth Gauge sold separately.

## COMMERCIAL VEHICLE TPMS



PN: HTS-T01A

### EU-Pro Truck 1.0 Valve-Mounted Sensor (VMS)

Our simple and easy to use Truck 1.0 TPMS sensors fits seamlessly into your existing tyre changing processes, and are compatible with both OE and aftermarket Truck TPMS valves.

- Mandatory for new M1, M2, M3, N1, N2, N3, O3, O4 EU vehicle registrations from July 2024
- European database of trucks, trailers, and buses, with new protocols automatically added
- Compatible with ATEQ's VT Truck 2.0, and H56/57, VT56/57/67 tools with a truck upgrade
- 24-month warranty or 100,000-km, whichever comes first.
- Cutting-edge battery and the latest NXP chip
- 433MHz frequency required for EU TPMS systems

### Compatible Hamaton Valves



PN: 6-460

PN: 6-461

PN: 6-462

PN: 6-463

PN: 6-464

PN: 6-465

### Compatible Alcoa Valves



PN: 6-430

PN: 6-431

PN: 6-432

PN: 6-433

PN: 6-434



PN: HTS-T01B

### EU-Pro Truck 1.0 Band-Mounted Sensor (BMS)

The EU-Pro Truck 1.0 band mounted sensor (BMS) is the same innovative sensor technology as the valve mounted option but with an adjustable, universal fitment band mounting solution for easy installation and maintenance without valves.

- Universal fitment without any modification, additional tools or components
- Features band loop mounts and hook and loop fastenings for fast and efficient fitment
- Compatible with ATEQ's VT Truck 2.0, and VT56/57/67 and H56/57 tools with a truck upgrade
- 24-month warranty or 100,000-kilometres, whichever comes first
- Cutting-edge battery and the latest NXP chip
- 433MHz frequency required for commercial vehicle TPMS systems



PN: ATE-D091

### ATEQ VT Truck 2.0 with OBD Power Converter

The ATEQ VT Truck 2.0 offers a range of functions specifically designed for the maintenance of trucks, buses, coaches, trailers, and light trucks.

- 2.8" colour display
- Program aftermarket sensors designed for heavy-duty commercial vehicles
- Global database for trucks, buses, coaches, trailers, and light trucks
- Easily read sensors, even in twin wheels, up to 22 wheels
- Tyre management
  - Measure tyre tread depth\*
- OBDII capability for on-board diagnostics
- WiFi & real time updates, powered by Live Sensor™
- One-year software subscription

\*Tyre Tread Depth Gauge sold separately.

### Truck Upgrades | H56/57 & VT56/57/67

Truck upgrades enable diagnostic tool users to read and diagnose TPM systems on commercial vehicles.

These upgrades allow users to service both passenger and commercial vehicles without investing in another tool. Upgrading your tool unlocks a separate menu dedicated to commercial vehicles TPMS maintenance.

Includes:

- Software Upgrade
- OBD Power Converter



H57: HAM-D097 | VT57: ATE-D097

H56: HAM-D096 | VT56: ATE-D096

## ESSENTIAL TOOLS FOR SERVICING

Our tool kit and carry case is an essential piece of equipment for garages, workshops and tyre bays, as it contains all the tools required to service valves.

Compatible with every valve on the market, this tool kit reduces TPMS servicing times by ensuring you have the correct tool available and lowers the risk of damaged service parts caused by varying torque settings among valves and service kits.

### Contents:

- Calibrated torque tool, including:
  - o 7mm, 11mm and 12mm hex sockets
  - o 10, 15 and 20 Torx bits
- Valve core torque tool
- Grommet removal tool
- T6 Torx screwdriver

PN: 6-313



## STARTER KIT PRO

The Starter Kit Pro contains a selection of the most popular replacement parts, which cover 99% of European direct TPMS-enabled vehicles.

With 52 valves and 12 service kits (for OE and aftermarket sensors), the Starter Kit Pro removes the concern of not having the correct replacement parts to hand.

The Starter Kit Pro's contents are also available as replacement parts in boxes of 10.

PN: 6-348

### Find the Correct Replacement Parts Online

The Hamaton website is home to our Vehicle Look-Up tool designed to help users quickly identify replacement TPMS parts for their vehicle. Just enter the make, model and year of manufacture to begin your search.

UK: [www.hamaton-tpms.com](http://www.hamaton-tpms.com)

DE: [www.hamaton-tpms.de](http://www.hamaton-tpms.de)



## OPTIONAL UPGRADES & ADD-ONS

### ATEQ Tyre Tread Depth Gauge

This ergonomic tool accessory quickly captures three precise depth measurements (inner, centre and outer) of up to seven tyres per vehicle.

Identifying a worn tyre enables garages to upsell replacement tyres, improves road safety, and reduces the risk of accidents.

Compatible with the VT67, VT57 and H57 diagnostic tools.

PN: ATE-D027



### Universal Sensor Upgrade

Increase the universal sensor coverage of your Hamaton H57 diagnostic tool to include sensors from the following brands: ALCAR Sensor, ALLIGATOR Sens.it, BH SENS IntelliSens, VDO REDI-Sensor and SCHRADER EZ-sensor.

If users upgrade the sensor coverage, the subscription period will revert to the remaining time offered with the equivalent ATEQ tool.

### Software Updates

Having a valid software subscription and keeping diagnostic tools updated is essential as software updates provide new features and increased coverage meaning garages can service more vehicles.

Install WebVT to download the latest software update. VT67, VT57 and H57 owners can perform further updates via Wi-Fi.

[www.hamaton-tpms.com/webvt](http://www.hamaton-tpms.com/webvt)





# Hamaton | Innovation to Perfection



UK: [www.hamaton-tpms.com](http://www.hamaton-tpms.com)

DE: [www.hamaton-tpms.de](http://www.hamaton-tpms.de)



UK: [info@hamaton-tpms.com](mailto:info@hamaton-tpms.com)

DE: [info.gmbh@hamaton-tpms.com](mailto:info.gmbh@hamaton-tpms.com)

